

# 103 Llysfaen Road, Old Colwyn, LL29 9HL

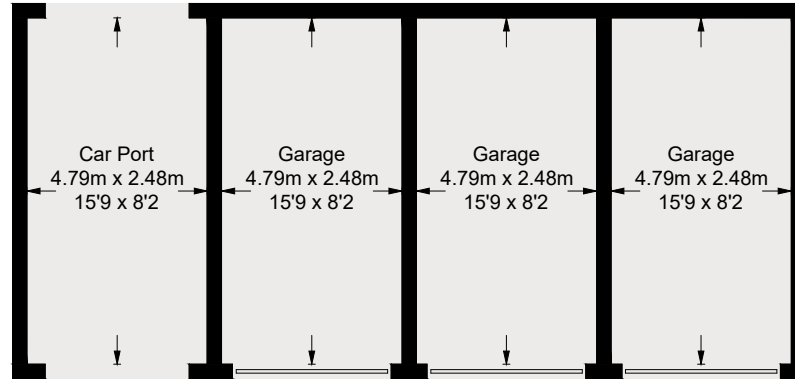
Approximate Gross Internal Area = 79.3 sq m / 853 sq ft

Basement = 38.2 sq m / 411 sq ft

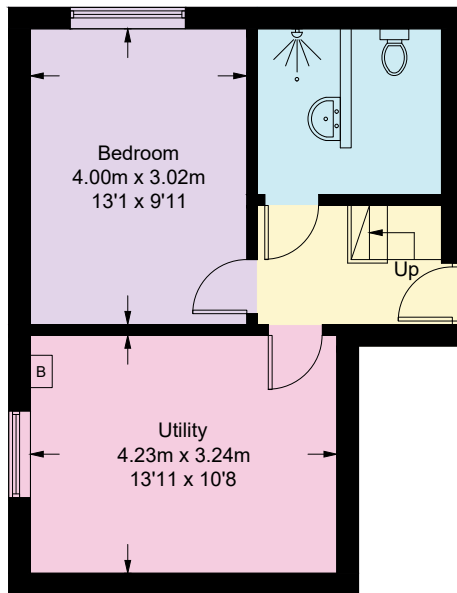
Garages = 37.9 sq m / 408 sq ft

Total = 155.4 sq m / 1672 sq ft

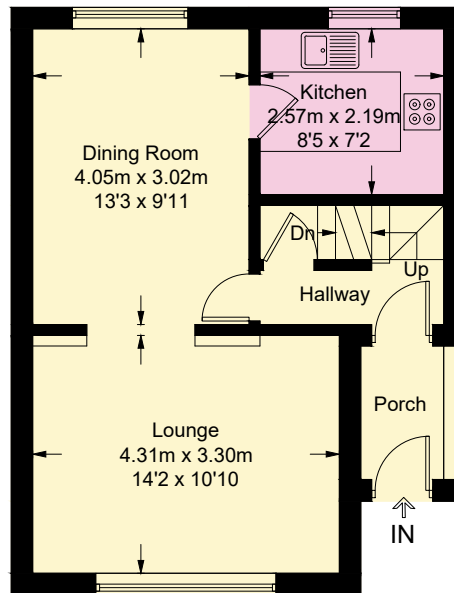
(Excluding Car Port)



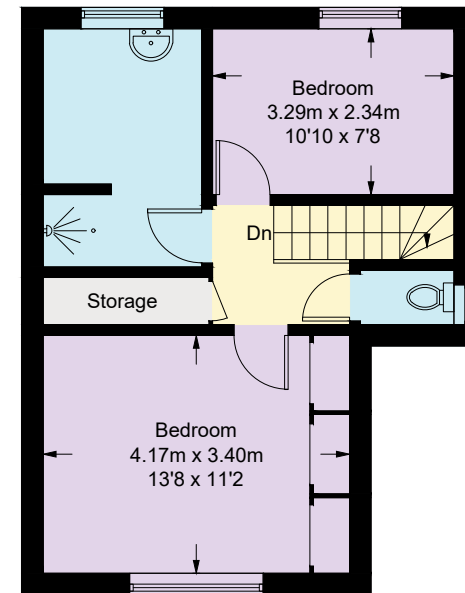
(Not Shown In Actual Location / Orientation)



**Basement**



**Ground Floor**



**First Floor**

This plan is for layout guidance only. Not drawn to scale unless stated. Windows and door openings are approximate. Whilst every care is taken in the preparation of this plan, please check all dimensions, shapes and compass bearings before making any decisions reliant upon them.